



Canvas

Destination Paris

LONDON

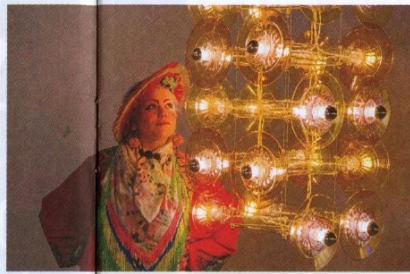
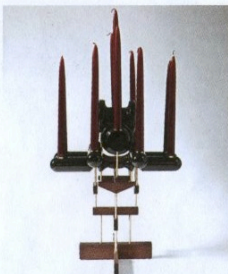
in partnership with

AIRFRANCE 

>> MEET THE ARTISTS

Bethan Laura Wood

Winner of the Rising Star award at the Design Week Awards in 2013, Bethan Laura Wood studied in the Royal College of Art's design products department, and since completing her MA in 2009 has undertaken residencies at London's Design Museum, the Fondazione Claudio Buziol in Venice and AAA Wanted New Artisans Vicenza. Wood showcases her lighting and furniture ranges exclusively at Nilufar Gallery and her collections, *Totem* and *Moon Rock*, were shortlisted for Product of the Year and Furniture of the Year respectively at the Design Museum's 2012 Design of the Year Awards.



Bethan Laura Wood's works have been acquired by the Musée de design et d'arts appliqués contemporains in Lausanne and the ABET Museum.

Christian Furr

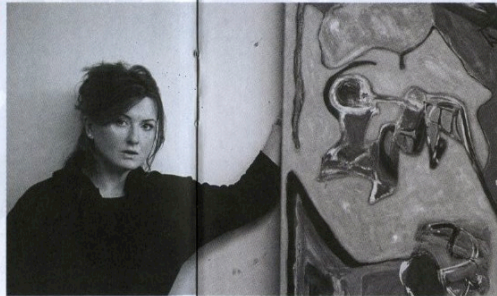
In 1995, Christian Furr became the youngest artist ever to officially paint a portrait of Queen Elizabeth II at 28 years old, a work commissioned by the Royal Overseas League. Other notable commissions have included portraits of Tim Henman (2005) and the late HRH Crown Prince Sultan Bin Abdulaziz Al-Saud (2008). In 2004, Furr was awarded an AoC Gold Award at the House of Commons and in 2005 he received the MCCA Best Award from the Robinsons Commission. He lives in London.



Christian Furr was selected by the Queen herself to paint her official portrait.

Sarah Dwyer

Irish-born artist Sarah Dwyer graduated from the Royal College of Art in 2004. Now based in London, her large, bright abstract paintings are characterised by great swathes of colour, with veils of paint applied in thin glazes contrasting with rougher textures and coarse brushstrokes. Dwyer's work is represented by the Josh Lilly Gallery, and in 2014 featured in the exhibition *New Order: British Art Today II* at the Saatchi Gallery.



Sarah Dwyer's *Hands Stuffing a Mattress* exhibition was named after Philip Guston's explanation about his paintings: "you know, painting is like hands stuffing a mattress."